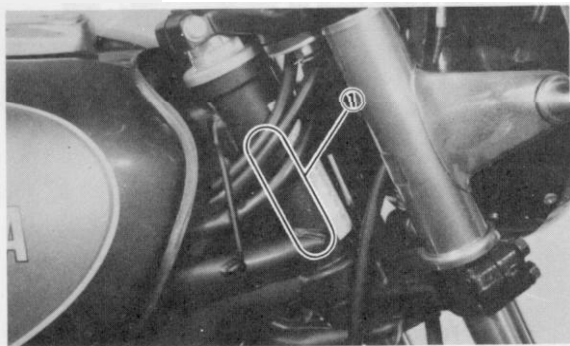


MACHINE IDENTIFICATION

Frame serial number

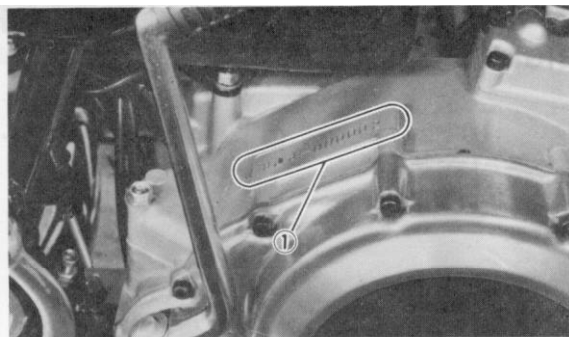
The frame serial number is stamped into the right side of the steering head pipe.



1. Frame serial number

Engine serial number

The engine serial number is stamped into the elevated part of the right rear section of the engine.



1. Engine serial number

NOTE:

The first three digits of these numbers are for model identification; the remaining digits are the unit production number. These identification numbers are used to register Your motorcycle with the licensing authority in your state as well as with the manufacturer. Keep a record of these numbers for reference when ordering parts from Your Yamaha dealer. In case of theft, the authorities will need these numbers and Your model name for identification.