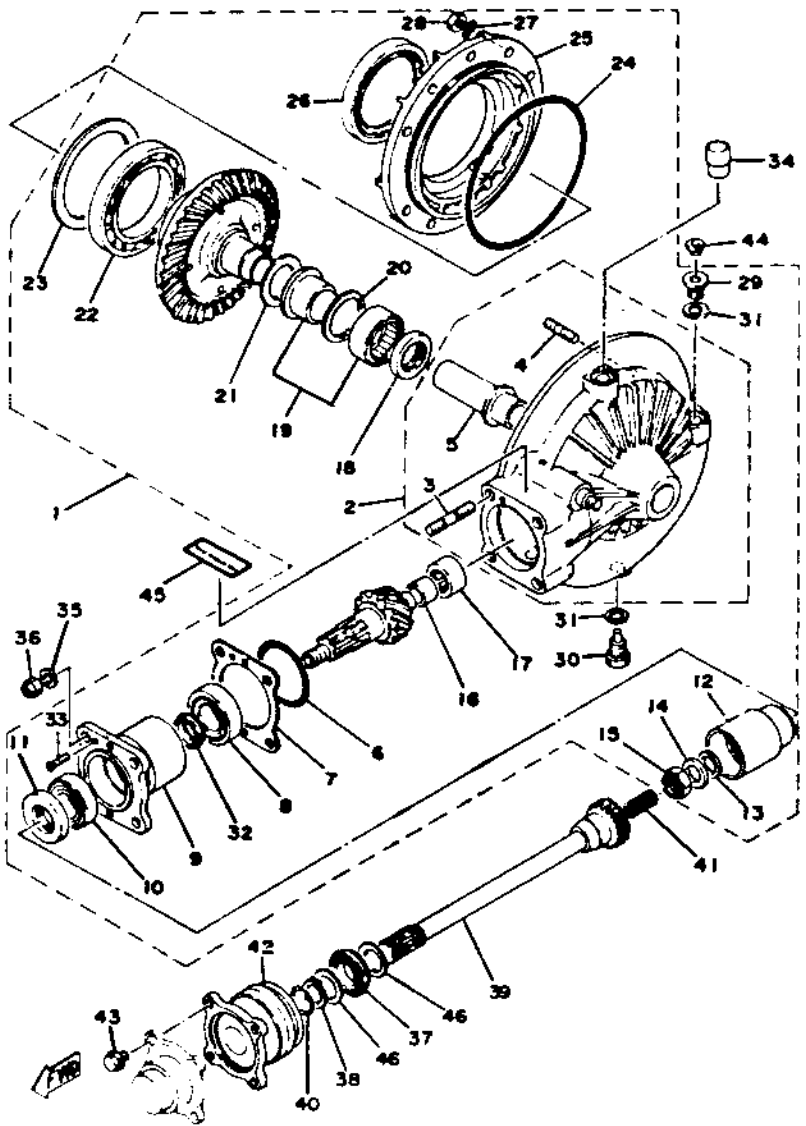


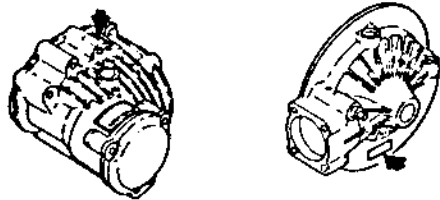
# FINAL DRIVE GEAR · DRIVE SHAFT



Ref. No.	Part Number	Description	Qty.	Remarks
----------	-------------	-------------	------	---------

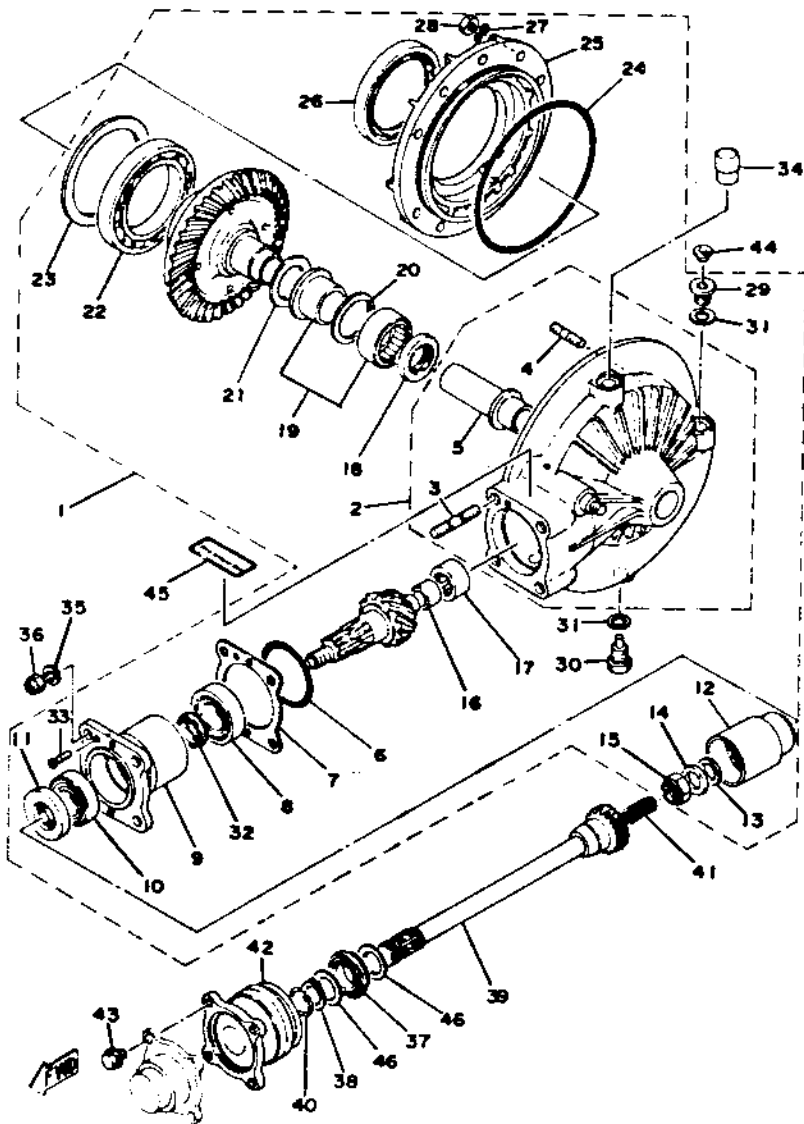
Please take notice of the following points, when you place an order for the parts of MIDDLE DRIVE GEAR and FINAL DRIVE GEAR sections.

- Two kinds of parts are applied to both sections.  
 TYPE I YG0-00000-00-0G  
 TYPE II 1J7-00000-Y0-(N0) or 90000-00000
- Discrimination for these two types can be provided with the marking of "YAMAHA" displayed on TYPE II parts at the arrow "↙" marking section, but TYPE I parts do not have the marking of "YAMAHA".



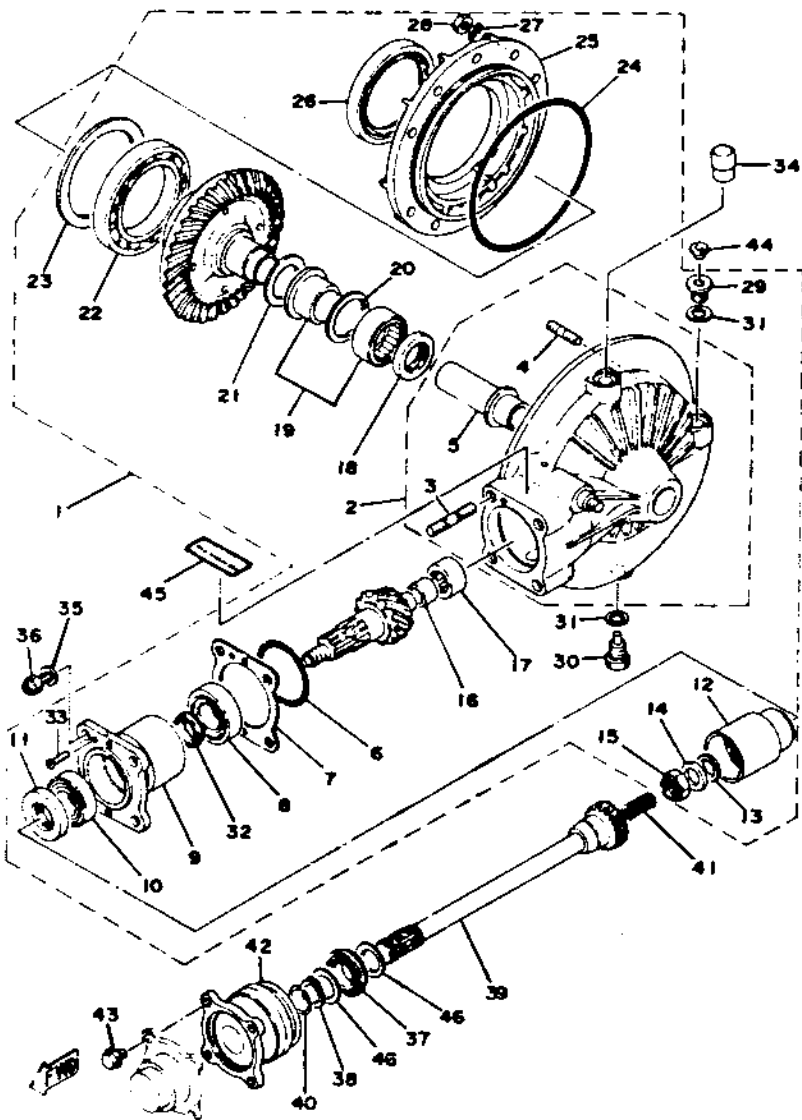
1	1J7-46101-N0-00	REAR AXLE GEAR CASE ASS'Y (YG4-11000-32-0G).....	1	TYPE 1
2	1J7-46150-Y0-00	DRIVESHAFT HOUSING COMP. (YG4-11011-50-YG).....	1	
3	90116-10248-00	.. BOLT, stud (YG9-00903-91-3G)	4	M10-50L
4	90116-08247-00	.. BOLT, stud (YG9-00901-91-3G)	10	M8-34L
5	1J7-46153-Y0-00	.. COLLAR, guides (YG4-11706-80-0G).....	1	
6	93210-58346-00	.. O-RING (2-58) (YG9-00008-96-1G).....	1	

# FINAL DRIVE GEAR · DRIVE SHAFT

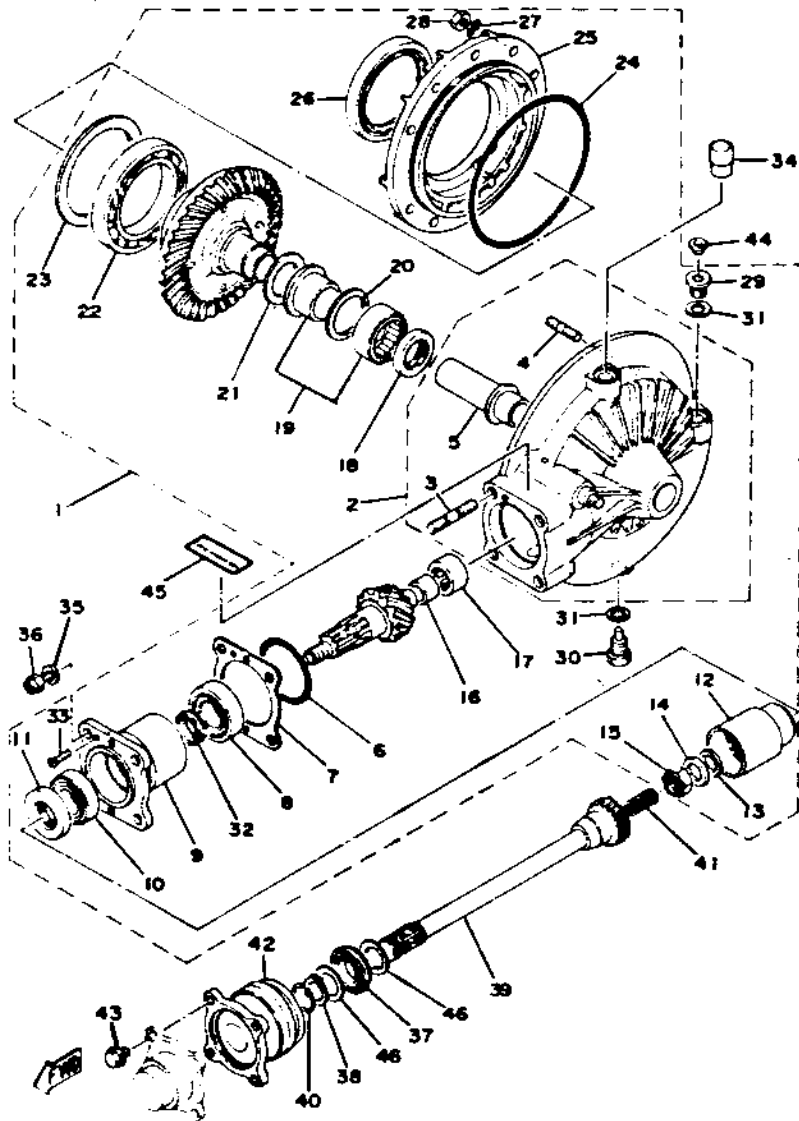


Ref. No.	Part Number	Description	Qty.	Remarks
7	1J7-46127-Y0-30	SHIM, drive pinion (0.30) (YG4-11708-10-0G)	1	U.R.
	1J7-46127-Y0-35	SHIM, drive pinion (0.35) (YG4-11708-20-0G)	1	U.R.
	1J7-46127-Y0-40	SHIM, drive pinion (0.40) (YG4-11708-30-0G)	1	U.R.
	1J7-46127-Y0-45	SHIM, drive pinion (0.45) (YG4-11708-40-0G)	1	U.R.
	1J7-46127-Y0-50	SHIM, drive pinion (0.50) (YG4-11708-50-0G)	1	U.R.
	1J7-46127-Y0-50	SHIM, drive pinion (0.55) (YG4-11708-60-0G)	1	U.R.
8	93332-00024-00	BEARING, tapered roller (YG9-00908-17-3G)	1	
9	YG4-11006-90-1G	HOUSING, bearing	1	
	1J7-46124-Y0-00	HOUSING, bearing	1	
10	93332-00023-00	BEARING, tapered roller (YG9-00906-17-3G)	1	
11	93101-38086-00	OIL SEAL (S-38-50-7) (YG9-00971-96-0G)	1	
12	YG4-11707-11-0G	COUPLING, gear (YG4-11707-10-0G)	1	
	1J7-46123-Y0-00	COUPLING, gear	1	
13	YG9-00922-14-4G	SPACER, bearing (14-20-1.00)	1	U.R.
	YG9-00922-24-4G	SPACER, bearing (14-20-1.52)	1	U.R.
	YG9-00922-34-4G	SPACER, bearing (14-20-1.54)	1	U.R.
	YG9-00922-44-4G	SPACER, bearing (14-20-1.56)	1	U.R.
	YG9-00922-54-4G	SPACER, bearing (14-20-1.58)	1	U.R.
	YG9-00922-64-4G	SPACER, bearing (14-20-1.60)	1	U.R.
	YG9-00922-74-4G	SPACER, bearing (14-20-1.70)	1	U.R.
	YG9-00922-84-4G	SPACER, bearing (14-20-1.80)	1	U.R.
	YG9-00922-94-4G	SPACER, bearing (14-20-1.90)	1	U.R.

# FINAL DRIVE GEAR - DRIVE SHAFT



Ref. No.	Part Number	Description	Qty.	Remarks
14	90201-14632-00	WASHER, plate (14-26-4) (YG9-00933-44-4G) . . . . .	1	
15	90185-14070-00	NUT, self-locking (YG9-00001-62-7G) . . . . .	1	M14-P1.5
16	1J7-46122-Y0-00	RACE, inner (YG4-11708-80-0G)	1	
17	93317-41510-00	BEARING (YG9-00920-47-6G)	1	
18	93101-30084-00	OIL SEAL (S-30-42-7) (YG9-00968-76-0G) . . . . .	1	
19	1J7-46106-N0-00	BEARING (YG9-00942-77-5G)	1	
20	1J7-46118-Y0-20	WASHER, thrust (37-47-2) . . . . .	1	
	1J7-46118-Y0-18	WASHER, thrust (37-47-1.8) (YG4-11708-70-0G) . . . . .	1	U.R.
	1J7-46118-Y0-19	WASHER, thrust (37-47-1.9) . . . . .	1	U.R.
	1J7-46118-Y0-21	WASHER, thrust (37-42-2.1)	1	U.R.
21	1J7-46119-Y0-10	SHIM, thrust (33-45-0.1) (YG9-00974-14-4G) . . . . .	1	U.R.
	1J7-46119-Y0-20	SHIM, thrust (33-45-0.2) (YG9-00974-24-4G) . . . . .	1	U.R.
22	93316-01402-00	BEARING (16014) (YG9-00901-37-1G) . . . . .	1	
23	1J7-46117-Y0-30	SHIM, ring gear (95-110-0.3) . . . . .	1	U.R.
	1J7-46117-Y0-35	SHIM, ring gear (95-110-0.35)	1	U.R.
	1J7-46117-Y0-40	SHIM, ring gear (95-110-0.4) . . . . .	1	U.R.
	1J7-46117-Y0-45	SHIM, ring gear (95-110-0.45)	1	U.R.
	1J7-46117-Y0-50	SHIM, ring gear (95-110-0.5) . . . . .	1	U.R.
	YG9-00928-64-4G	SHIM, ring gear (95-110-5.5) . . . . .	1	U.R.
24	93211-44348-00	O-RING (3-144) (YG9-00011-86-1G) . . . . .	1	
25	1J7-46152-Y0-00	HOUSING, bearing . . . . .	1	



Ref. No.	Part Number	Description	Qty.	Remarks
26	93102-70167-00	OIL SEAL (SD-70-90-10) (93102-70166)	1	TYPE I & II
27	92901-08700-00	WASHER, wave (YG9-00014-84-1G)	10	
28	95311-08600-00	NUT	10	M8-P1.25
29	90340-14046-00	PLUG, oil inlet	1	
30	90340-14042-00	PLUG, oil drain	1	
31	214-11198-01-00	GASKET	2	
32	1J7-46129-Y0-00	SPACER, expansion	1	
33	98703-05018-00	SCREW, flat head	1	TYPE II
34	2H7-17590-00-00	BREATHER COMP. (1J7-17590-01)	1	
35	92903-10100-00	WASHER, spring	4	
36	95611-10100-00	NUT, U	4	
37	93108-27006-00	OIL SEAL (OSO-27-43.6-7)	1	
38	93410-26011-00	CIRCLIP (S-26)	1	
39	1J7-46172-01-00	SHAFT, drive	1	
40	90468-14067-00	CLIP	1	
41	90501-18442-00	SPRING, compression	1	
42	1J7-46170-02-00	BALL JOINT COMP.	1	
43	90105-08066-00	BOLT, washer based	4	
44	341-23469-00-00	CAP, bolt	1	
45	1J7-46181-11-00	LABEL, oil caution (1J7-46181-10)	1	
46	90201-27623-00	WASHER, plate (27-41-0.5)	2	