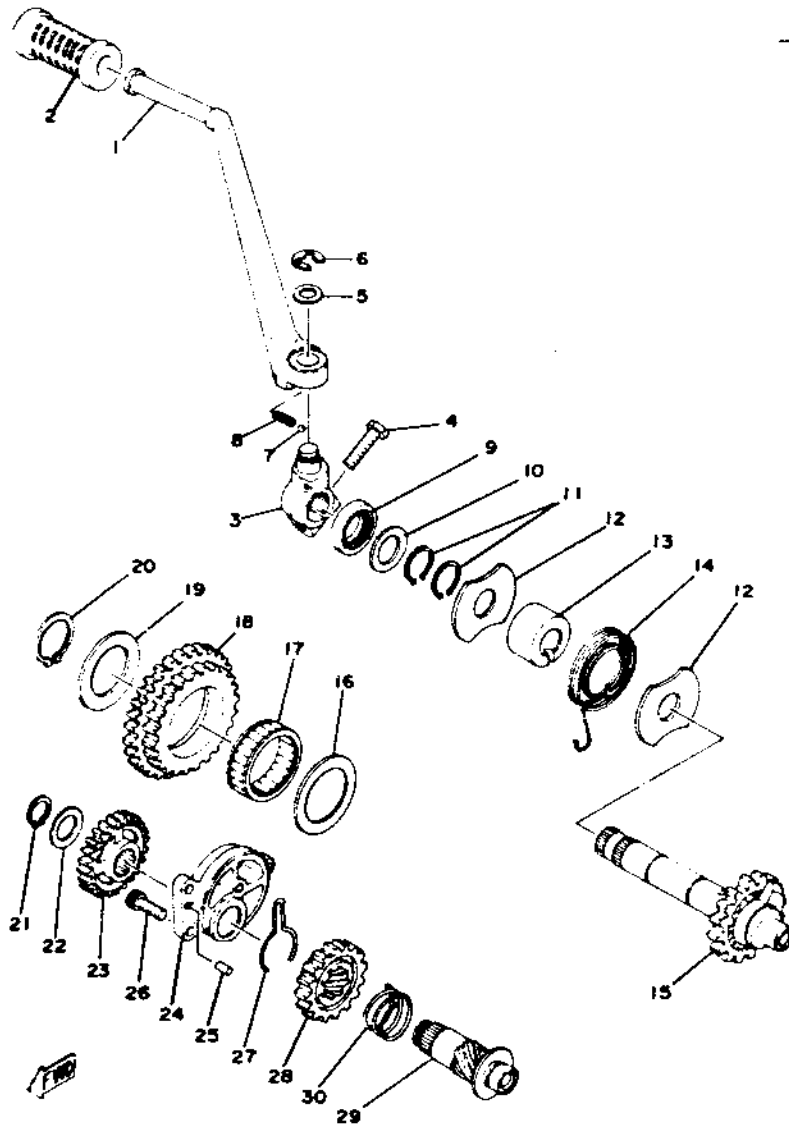
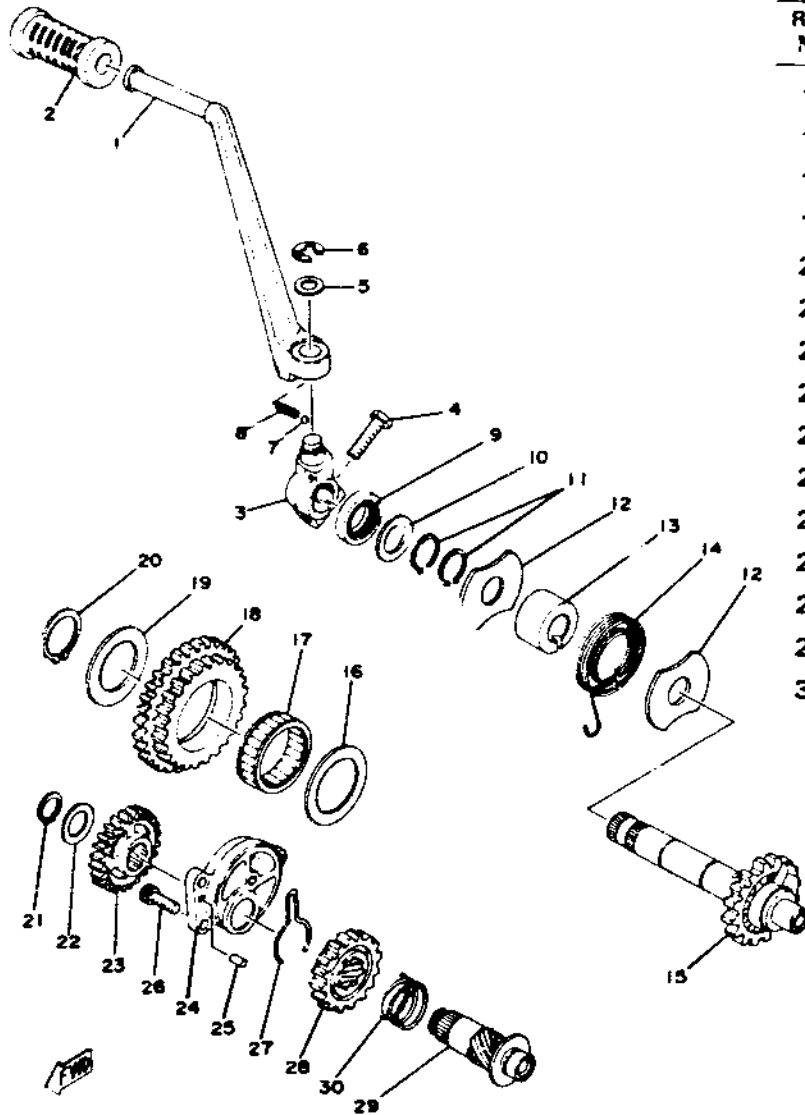


KICK STARTER



Ref. No.	Part Number	Description	Qty.
1	2F3-15611-00-93	CRANK, kick	1
2	156-15618-01-00	COVER, kick lever.....	1
3	278-15621-00-00	BOSS, kick crank	1
4	97321-08030-00	BOLT	1
5	90201-15340-00	WASHER, plate (15.5-25-1.6)...	1
6	93430-10016-00	CIRCLIP (E-10)	1
7	93507-32009-00	BALL (7/32 inch)	1
8	90501-12081-00	SPRING, compression (278-15622-00)	1
9	93102-20108-00	OIL SEAL (SD-20-30-7)	1
10	90201-20276-00	WASHER, plate (20.2-30-1.0) (328-17116-00)	1
11	93410-20009-00	CIRCLIP (S-20)	2
12	278-15676-00-00	COVER, kick spring	2
13	371-15666-00-00	SPACER	1
14	90508-30051-00	SPRING, torsion (278-15665-00)	1
15	1J7-15660-00-00	KICK SHAFT ASS'Y (22T)	1

KICK STARTER



Ref. No.	Part Number	Description	Qty.
16	1J7-15644-00-00	SHIM, kick shaft 1 (40.3-54-0.8)	1
17	93311-84026-00	BEARING	1
18	1J7-15650-00-00	KICK IDLE GEAR ASS'Y (38/30T)	1
19	1J7-15645-00-00	SHIM, kick shaft 2 (35.3-54-0.8)	1
20	93410-35027-00	CIRCLIP (S-35)	1
21	93410-17037-00	CIRCLIP (S-17)	1
22	150-17417-00-10	SHIM (17-25-1.0)	1
23	1J7-15516-01-00	GEAR, kick 4 (20T)	1
24	1J7-15654-00-00	HOLDER, kick gear	1
25	93604-10011-00	PIN, dowel (4-10)	1
26	91316-06020-00	BOLT, hexagon socket head	3
27	90468-26066-00	CLIP, special	1
28	1J7-15527-02-00	GEAR, kick 5 (20T)	1
29	1J7-15659-01-00	SHAFT, kick 2	1
30	90501-15469-00	SPRING, compression	1