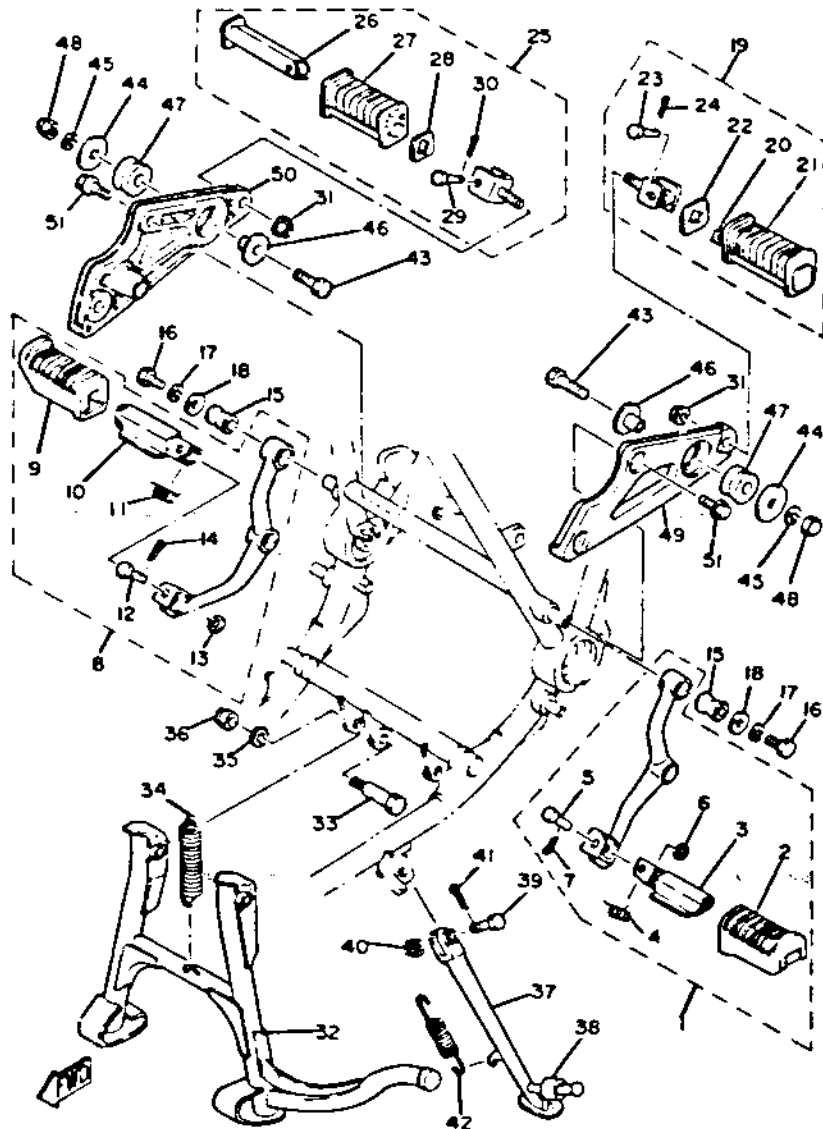


1	2G2-27410-00-00	FRONT FOOTREST ASS'Y (L.H.)	1
2	1J7-27413-01-00	. COVER, footrest.....	1
3	1J7-27451-00-00	. FOOTREST .....	1
4	90508-20154-00	. SPRING, torsion.....	1
5	90240-08063-00	. PIN, clevis.....	1
6	90201-08083-00	. WASHER, plate .....	1
7	91401-30015-00	. PIN, cotter.....	1
8	2G2-27420-00-00	FRONT FOOTREST ASS'Y (R.H.)	1
9	1J7-27413-01-00	. COVER, footrest.....	1
10	1J7-27461-00-00	. FOOTREST .....	1
11	90508-20155-00	. SPRING, torsion.....	1
12	90240-08063-00	. PIN, clevis.....	1
13	90201-08083-00	. WASHER, plate .....	1
14	91401-30015-00	. PIN, cotter.....	1
15	256-27414-00-00	DAMPER, footrest.....	4
16	97321-08014-00	BOLT .....	4
17	92903-08100-00	WASHER, spring (92901-08100)	4
18	90201-08107-00	WASHER, plate .....	4
19	2H7-27430-00-00	REAR FOOTREST ASS'Y 1 .....	1
20	447-27431-00-00	. FOOTREST, rear 1 .....	1
21	1J7-27433-00-00	. COVER, rear footrest.....	1
22	90209-18070-00	. WASHER .....	1
23	91701-06035-00	. PIN, clevis.....	1
24	91401-16015-00	. PIN, cotter (91401-16012)....	1
25	2H7-27440-00-00	REAR FOOTREST ASS'Y 2 .....	1
26	447-27441-00-00	. FOOTREST, rear 2.....	1



No.	Number	Description	Qty.
27	1J7-27444-00-00	. COTTER, rear footrest.....	1
28	90209-18070-00	. WASHER.....	1
29	91701-06035-00	. PIN, clevis.....	1
30	91401-16015-00	. PIN, cotter (91401-16012)....	1
31	90179-10247-00	NUT.....	2
32	3J3-27111-02-00	STAND, main.....	1
33	90109-10563-00	BOLT.....	2
34	90506-40145-00	SPRING, tension.....	1
35	92901-10600-00	WASHER, plate (92902-10600)	2
36	95601-10100-00	NUT, U.....	2
37	2G2-27311-01-00	STAND, side.....	1
38	3J3-27314-00-00	STOPPER.....	1
39	90102-10006-00	BOLT, with hole.....	1
40	90171-10012-00	NUT, castle.....	1
41	91490-20025-00	PIN, cotter (91403-20025).....	1
42	90506-28146-00	SPRING, tension.....	1
43	90101-10065-00	BOLT.....	2
44	90201-10714-00	WASHER, plate.....	2
45	92903-10100-00	WASHER, spring (92901-10100)	2
46	90387-10711-00	COLLAR.....	2
47	2Y4-27414-00-00	DAMPER, footrest.....	2
48	90176-10009-00	NUT, crown.....	2
49	2Y4-27412-00-00	BRACKET, footrest 1.....	1
50	2Y4-27422-00-00	BRACKET, footrest 2.....	1
51	90105-10108-00	BOLT, washer based.....	4