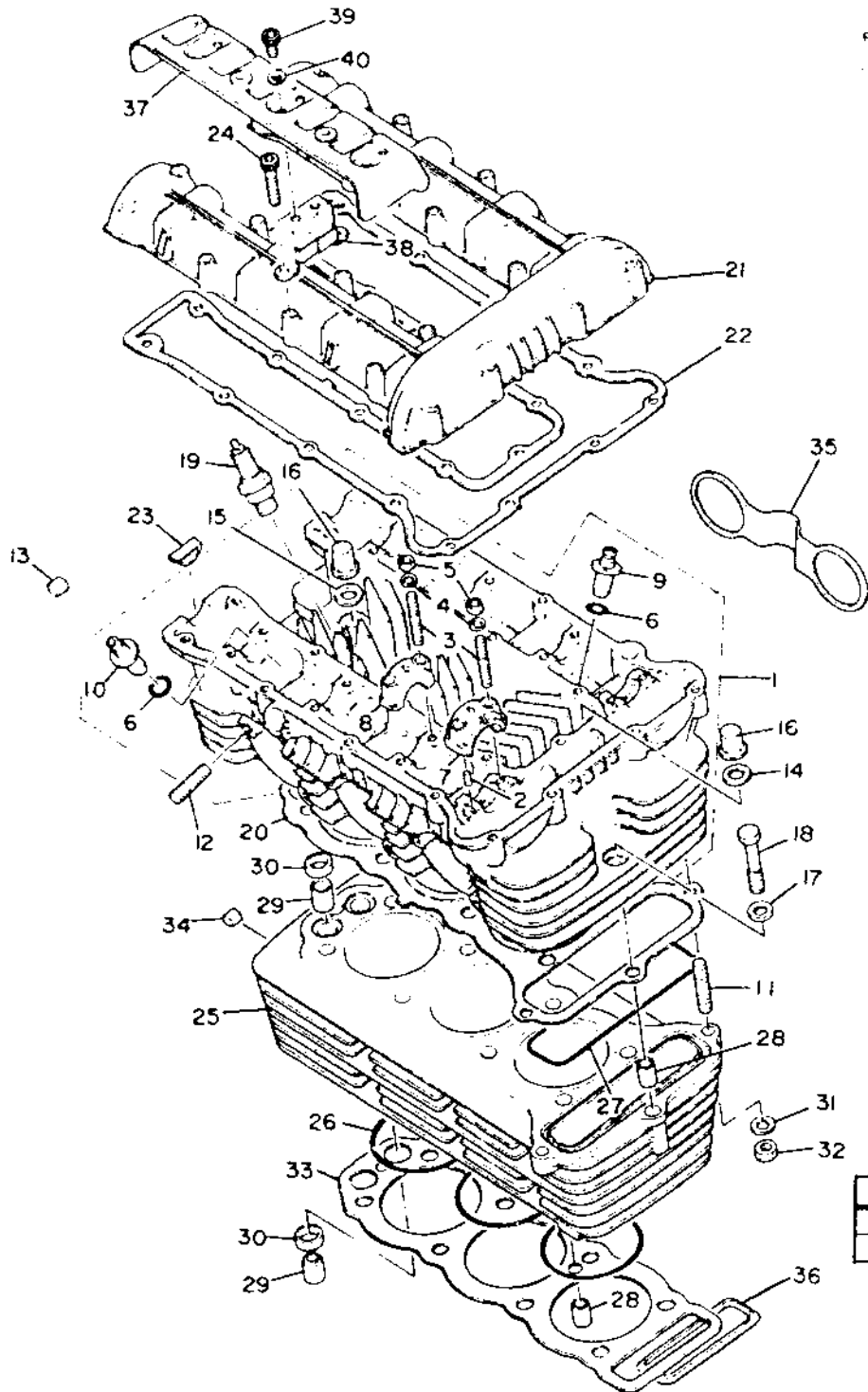


Ref. No.	Part Number	Description	Qty	Applicable Machine No.	Refer. Bolt
1	3J2-11110-00-00	CYLINDER HEAD ASSY	1		
2	93603-09004-00	PIN, dowel	4		
3	90116-06228-00	BOLT, stud	16		
4	92901-06600-00	WASHER, plate	16		
5	95301-06600-00	NUT	16		
6	9320-11313-00	O-RING	6		
7	1J7-12173-10-00	CAP, camshaft 1	2		
8	1J7-12183-10-00	CAP, camshaft 2	6		
9	1J7-11133-10-00	GUIDE, intake valve (1st O/S)	3		
10	1J7-11134-10-00	GUIDE, exhaust valve (1st O/S)	3		
11	90116-08161-00	BOLT, stud	2		
12	90116-08271-00	BOLT, stud	6		
13	434-11161-00-00	ABSORBER 1	19		
14	90201-10124-00	WASHER, plate	5		
15	90201-11597-00	WASHER, plate	3		
16	90179-10277-00	NUT	8		
17	90201-08382-00	WASHER, plate	2		
*18	97322-08045-00	BOLT	2		
19	94701-00117-00	PLUG, spark (NGK BP-7ES)	3		
*20	3J2-11181-02-00	GASKET, cylinder head 1	1		
21	2G2-11191-00-00	COVER, cylinder head 1	1		
22	1J7-11193-00-00	GASKET, head cover 1	1		
23	2G2-11138-00-00	PLUG	2		
24	91311-06035-00	BOLT	21		
*25	4R2-11310-00-00	CYLINDER	1		
26	93210-77363-00	O-RING	3		
27	1J7-11355-00-00	SEAL, cylinder 1	1		
28	91810-03014-00	PIN, dowel	2		

*Indicates new part numbers activated from March, 1980

Initial Engine Number / Frame Number	4R3-000101 / 4R3-000101
Bore / Stroke / Number Cylinders / Displacement (cc)	71.5mm / 68.6mm / 3 / 826cc
Compression Ratio / Compression Pressure Min~Max	9.2:1 / 9 ~ 11 kg/cm ²
Spark Plug Type	NGK BP7ES or Champion N7Y
Spark Plug Gap / Torque / Cap Ω	0.7 ~ 0.8mm / 2.0 m·kg / 5K Ω \pm 20%
Cylinder Head Cover	6 x 1.0: 1.0 m·kg
Cylinder Head:	10 x 1.25: 3.5 m·kg (Use Oil)
	8 x 1.25: 2.3 m·kg (Use Oil)

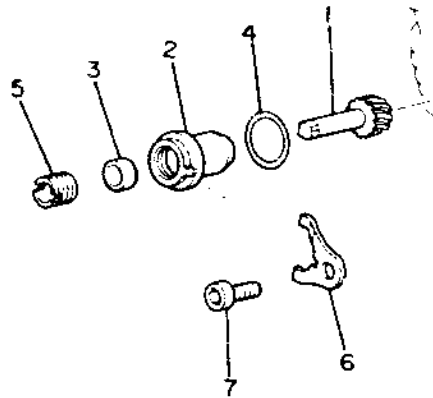
CYLINDER HEAD - CYLINDER



Ref. No.	Part Number	Description	Qty	Applicable Machine No.	Remarks: Refer to 1st Bull. No.
29	91830-24016-00	PIN, dowel	2		
30	1J7-11357-00-00	SEAL, cylinder 3	2		
31	90201-08382-00	WASHER, plate	2		
32	95316-08600-00	NUT	2		
33	3J2-11351-00-00	GASKET, cylinder	1		
34	434-11161-00-00	ABSORBER 1	10		
35	90465-08120-00	CLAMP	1		
36	3J2-11356-00-00	SEAL, cylinder 2	1		
37	1J7-11192-03-00	COVER, cylinder head 2	1		
38	1J7-11183-01-00	BRACKET, camshaft 1	3		
39	91316-06014-00	BOLT	6		
40	92906-06600-00	WASHER, plate	6		

Initial Engine Number / Frame Number	4R3-000101 / 4R3-000101
Bore / Stroke / Number Cylinders / Displacement (cc)	71.5mm / 68.6mm / 3 / 826cc
Compression Ratio / Compression Pressure Min ~ Max	9.2:1 / 5 ~ 11 kg/cm ²
Cylinder Head Cover	6 x 1.0: 1.0 m·kg
Cylinder Head:	10 x 1.25: 3.5 m·kg (Use Oil)
	8 x 1.25: 2.3 m·kg (Use Oil)
Spark Plug Type	NGK BP7ES or Champion N7Y
Spark Plug Gap / Torque / Cap Ω	0.7 ~ 0.8mm / 2.0 m·kg / 5K Ω \pm 20%

TACHOMETER GEAR



Ref No	Part Number	Description	Qty
1	1J7-17841-00-00	GEAR, driven (15T)	1
2	2F3-17811-00-00	HOUSING, tachometer gear	1
3	93104-07036-00	OIL SEAL	1
4	93210-15171-00	O-RING	1
5	256-17848-00-00	ADAPTER	1
6	1J7-17812-00-00	STOPPER	1
* 7	91311-06012-00	BOLT	1

*Indicates new part numbers activated from March, 1980