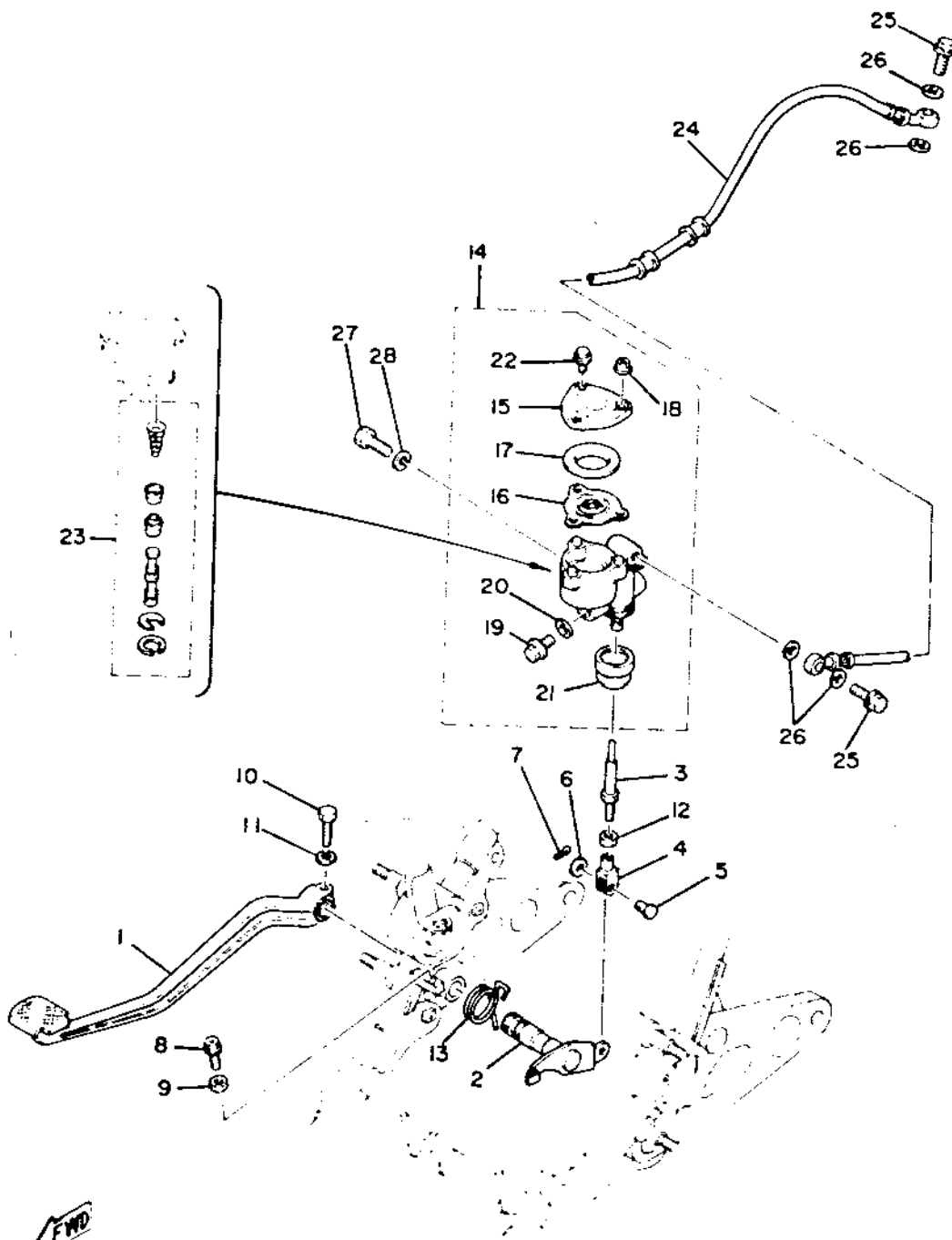


Ref No	Part Number	Description	Qty
1	3J2-25831-00-00	DISC, brake	1
2	90101-08477-00	BOLT	6
3	3H5-25834-00-00	WASHER, lock	1
* 4	3J3-25810-52-00	CALIPER ASS'Y.	1
5	3H5-W0045-01-00	BRAKE PAD KIT, front	1
6	1J3-25917-00-00	BOOT, caliper	1
7	1J3-25838-00-00	SLEEVE, caliper	1
8	90105-08145-00	BOLT, washer based	1
9	1J3-W0048-00-00	BREED SCREW KIT	1
10	1J3-25845-01-00	CAP, indicator	1
11	1J3-W0047-00-00	CALIPER SEAL KIT	1
12	3H5-25827-00-00	SHIM, caliper	1
13	3H5-25828-00-00	SHIM, caliper	1
14	95303-08800-00	NUT, crown	1
15	92903-08100-00	WASHER, spring	1

*Indicates new part numbers activated from March, 1980



Minimum Brake Lining Thickness	Front: 6.0mm	Rear: 6.0mm
Tire Size (Nominal Pressure)	F:3.25H19 (2.8 kg/cm ² /40 psi)	R:4.50H17 (2.8 kg/cm ² /40 psi)



Ref No	Par Number	Description	Qty
1	2G2-27211-00-93	PEDAL, brake	1
2	3J2-27212-00-00	SHAFT, brake pedal	1
3	3J2-27231-00-00	ROD, brake	1
4	1J3-27222-00-00	JOINT	1
5	90240-08013-00	PIN, clevis	1
6	90201-08083-00	WASHER, plate	1
7	91401-16015-00	PIN, cotter (91401-16012)	1
8	90153-06028-00	SCREW, hexagon	1
9	90170-06184-00	NUT	1
10	90109-06468-00	BOLT	1
11	92903-06100-00	WASHER, spring (92901-06100)	1
12	95301-08700-00	NUT	1
13	90508-45405-00	SPRING, torsion	1
14	1J7-25850-52-00	MASTER CYLINDER ASS'Y	1
15	1J3-25852-52-00	CAP, reservoir	1
16	1J3-25854-51-00	DIAPHRAGM, reservoir	1
17	1J3-25855-51-00	BUSH, diaphragm	1
*18	95706-05100-00	NUT, flange	2
19	90153-10015-00	SCREW, hexagon	1
20	90201-10610-00	WASHER, plate	1
21	1J3-25862-51-00	BOOT, master cylinder	1
22	90105-05129-00	BOLT, washer based	1
23	1J3-W0042-50-00	CYLINDER KIT, master	1
24	3J3-25874-01-00	HOSE, brake	1
25	90401-10034-00	BOLT, union	2
26	90201-10118-00	WASHER, plate	4
27	97306-08025-00	BOLT	2
28	92906-08100-00	WASHER, spring	2

*Indicates new part numbers activated from March, 1980

